



**Neuberg**  
DIAGNOSTICS

• India • UAE • South Africa • USA

# *Neu* INSIGHTS

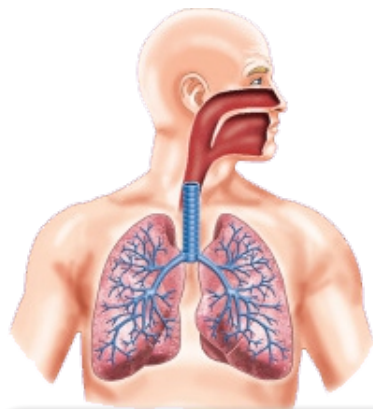
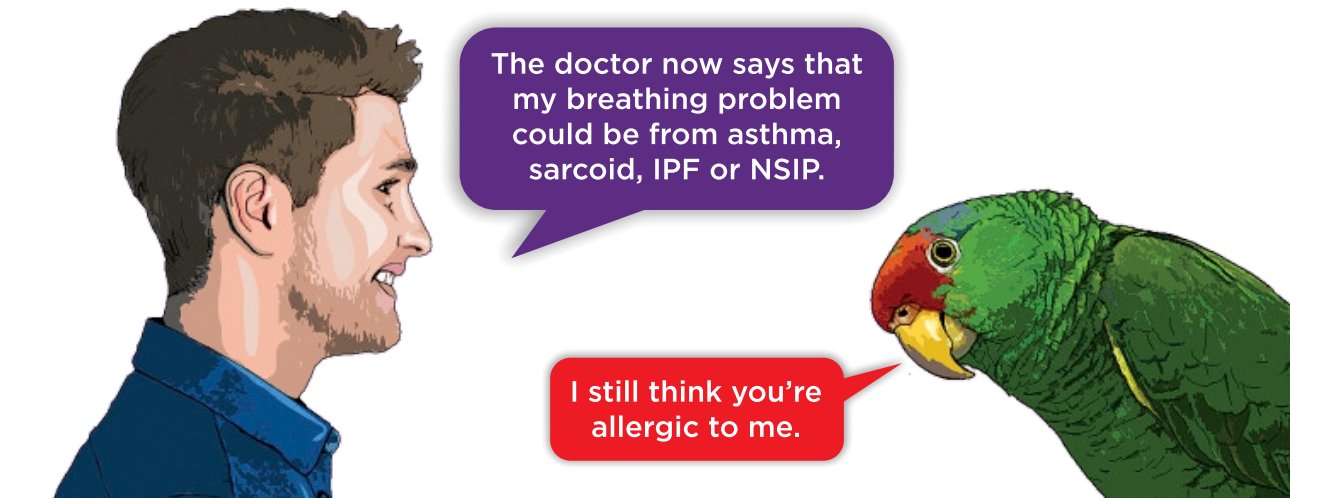


## **Hypersensitivity** **Pneumonitis**

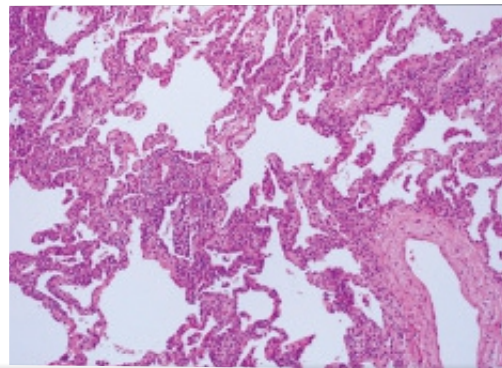
Serial number : 013 Edition : 1. 2022

# Introduction

Hypersensitivity pneumonitis (HP), or extrinsic allergic alveolitis, is an inflammatory syndrome of the lung caused by repetitive inhalation of antigenic agents in a susceptible host. The syndrome varies in intensity, clinical presentation, and natural history depending on the inciting agent, as well as the intensity of exposure. In most cases, disease can be reversed with prompt diagnosis followed by identification and removal of exposure risks. As such, prognosis is generally very good.



Bronchoalveolar Lavage lymphocytosis  $\geq 30\%$



There is thickening of the alveolar septae by intense lymphocytic interstitial infiltrates

The diagnosis of hypersensitivity pneumonitis is made with compatible clinical symptoms, an inciting (including) antigen, the abnormal high resolution CT scan, pulmonary function testing, evidence of IgG antibodies to the antigen, and for some patients, lung biopsy.



## ImmunoCAP™ specific IgG against common antigens

1. Pigeon serum proteins, feathers and droppings
2. Penicillium chrysogenum (P.notatum )
3. Cladosporium herbarum
4. Aspergillus fumigatus
5. Mucor racemosus
6. Alternaria alternate

Bird Fancier's hypersensitivity Pneumonitis

ImmunoCAP™ Ge91

Cut-off for IgG ImmunoCAP™ Ge91-30mg<sub>u</sub>/ l 1,2

Sensitivity

Specificity

100%

84.62%

Measuring range:  
2.0 - 200 mg/l

Accurate and  
reproducible test results

Large panel of  
standardized  
high-quality allergens  
available

### References:

1. Khan S, Roy Chowdhury S, Ghosh S, Sengupta A, Ramasubban S, Sen D. Pulmo Face 2015 Nov 1;15:48.
2. Bhattacharyya P, Dasgupta S, Paul M, Saha D, Sengupta S, Bhattacharyya PP, Lung India, 2018 May 1; 35(3):215.



# Hypersensitivity Pneumonitis Panel

by Immunocap method.



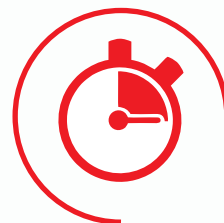
**Sample  
type:**  
Serum



**Specimen  
Volume:**  
2 mL



**Transportation  
Instructions:**  
Refrigerated



**TAT:**  
Within 7 days  
of receipt of  
sample.



**Knock out** medical emergencies,  
**before it's too late!**

**HEALTH ko aasani se na lo,  
TEST aasani se karo**



**Blood Tests**



**Health Packages**



**ICMR Approved COVID Tests**

**“ Get your blood test done  
Anywhere, Anytime...  
Neuberg hain na ”**

# Notes :

A series of horizontal dashed lines for writing notes.

# PARTNERS IN HEALTH



## DR. AAKASH SHAH

Consultant Pathologist  
[akash.shah@supratechlabs.com](mailto:akash.shah@supratechlabs.com)  
+91-7046010135



## DR. SANDIP SHAH

Consultant Pathologist  
M.D (Pathology & Bacteriology)  
Laboratory Director  
[drsandip@neubergdiagnostics.com](mailto:drsandip@neubergdiagnostics.com)  
079-40408181

FOR MORE DETAILS, CONTACT US AT



**079 4040 8181**

[neubergdiagnostics.com](http://neubergdiagnostics.com)



**Neuberg**  
DIAGNOSTICS

● India ● UAE ● South Africa ● USA